

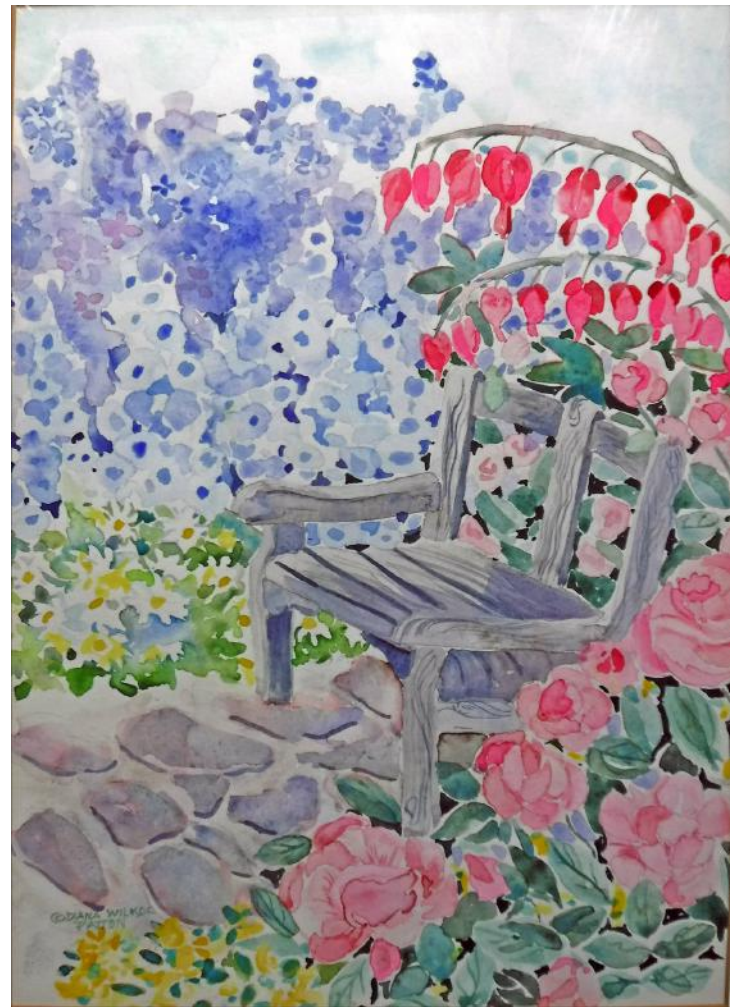
**Somerville Public Library Gallery  
Exhibit by Diana Wilkoc Patton  
June 1-30, 2019**

**Right: Fishes' Roundabout \$575.**

**Center: Tangle Trees Three \$125.**

**Lower: Monarchs Mingle in Spring  
\$275.**





**Above Left:  
Roses' Melody  
\$155.**

**Above Right:  
Garden Chair  
with Bleeding  
Hearts \$155.**

**Right: Monet's  
Wisteria Bridge  
& Water Lilies  
\$145.**





**Above: Balloons over Oldwick, NJ \$250.**  
(currently on exhibit at Somerset Chamber of  
Commerce, Grove St., Somerville)



**Center: Blue and White Still-Life I**  
26" x 36" \$525.

**Bottom: Balloons and Blooms \$225.**

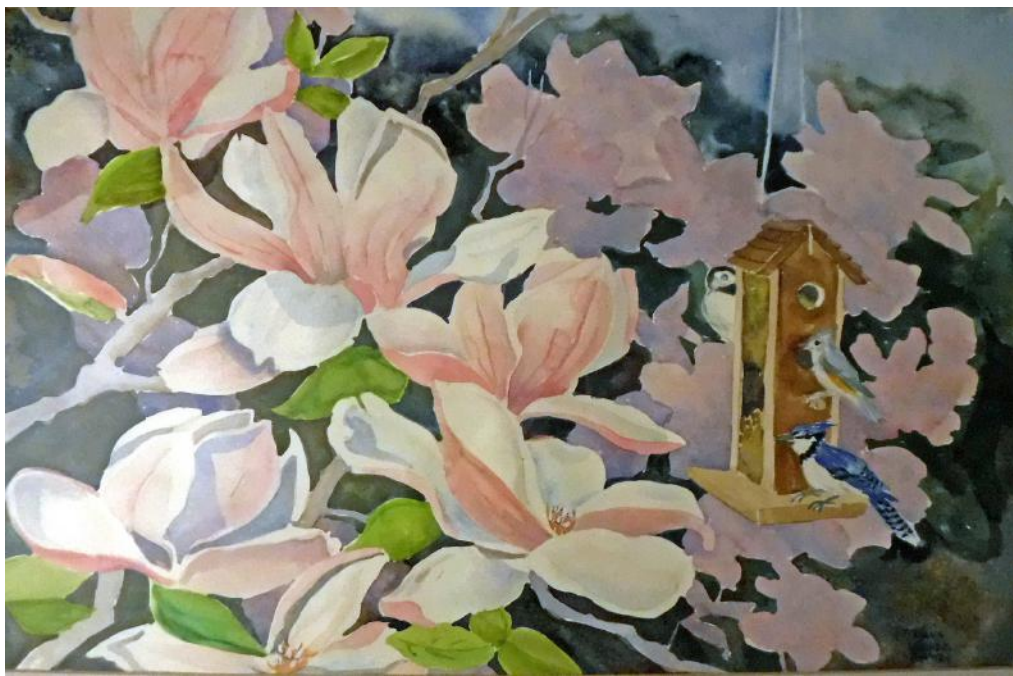




Left: November Garden  
26" x 40" \$625.

Below: Cabbage 14" x 26"  
\$175.





**Above: Magnolias and Birds  
\$225.**

**Center: Rockin' Out Frogs  
\$225.**

**Below: Water Lilies of Center  
Pond \$250.**



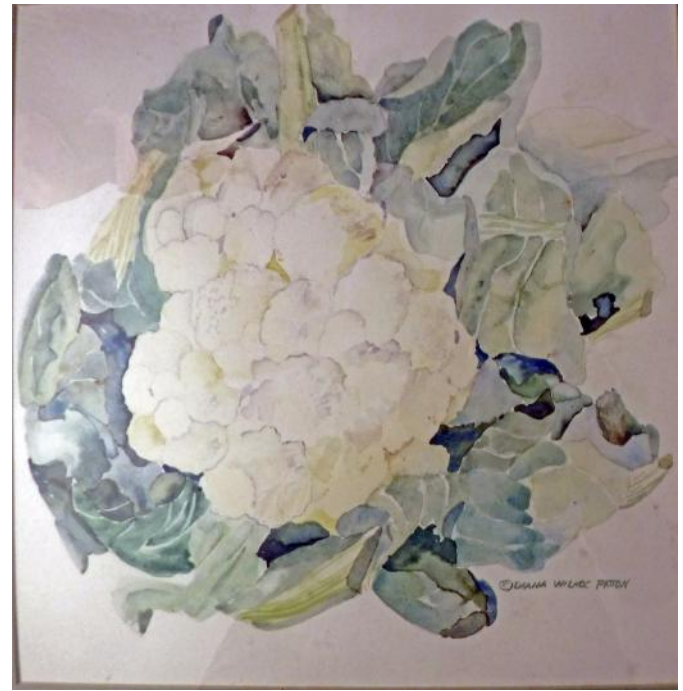


**Above: Galapagos: Marine Iguanas and Sally Lightfoot Crab \$185.**

**Center: Flower Lovers \$235.**

**Below: Sally Lightfoot and Marine Iguanas Roundabout \$155.**





Left: Studio window with Tiffany Lamp  
28" c 36" \$475.

Above right: Cauliflower Unfurled! \$145.

Below: Spirited Porch \$250.





**Above: Bubble Fishes \$250.**

**Right: Squash Leaves and Blossoms \$250.**

